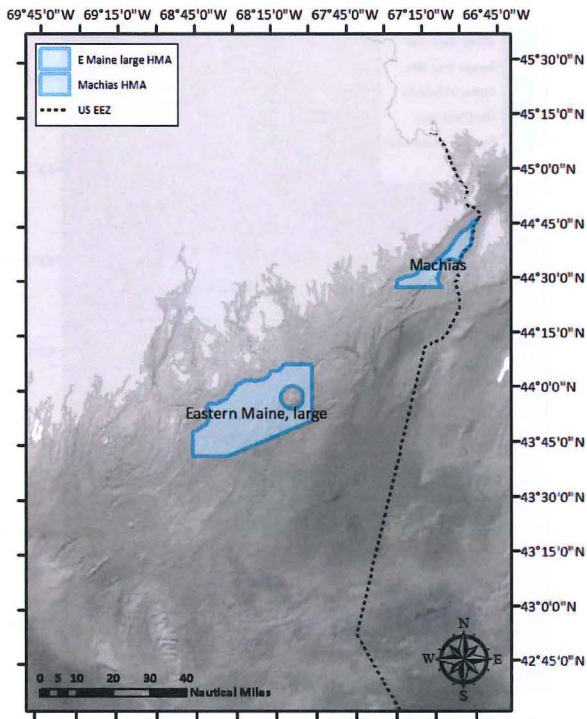


#6a.

# Omnibus Essential Fish Habitat Amendment 2 Spatial Management Alternatives Maps

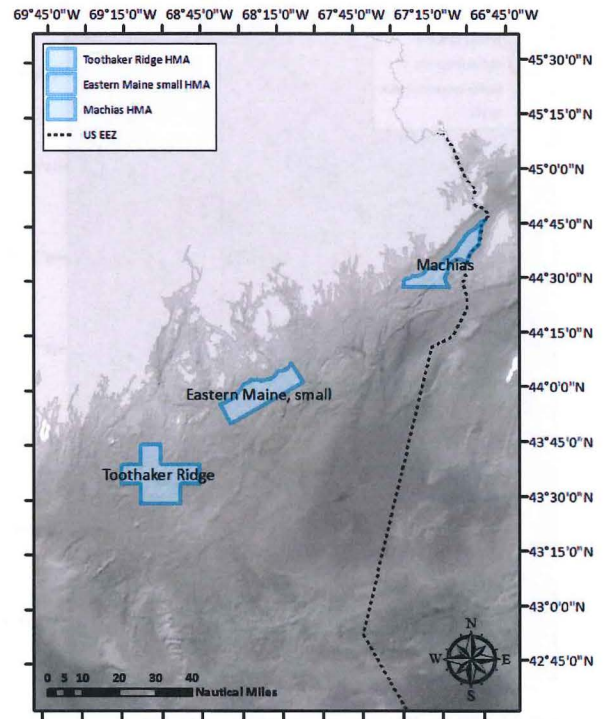
## Eastern Gulf of Maine Habitat Management Alternatives

### Alternative 2



WGS 1984 UTM Zone 19N projection; map updated Sept 12, 2013

### Alternative 3

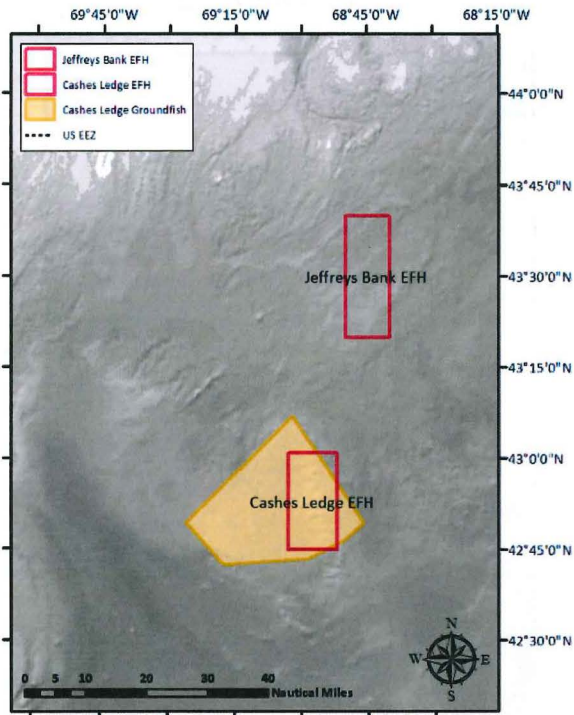


WGS 1984 UTM Zone 19N projection; map updated Sept 12, 2013

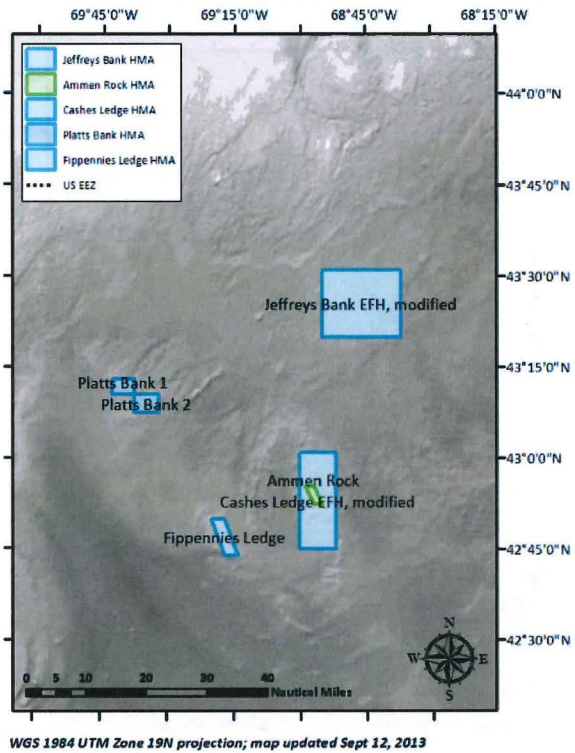
# Omnibus Essential Fish Habitat Amendment 2 Spatial Management Alternatives Maps

## Central Gulf of Maine Habitat Management Alternatives

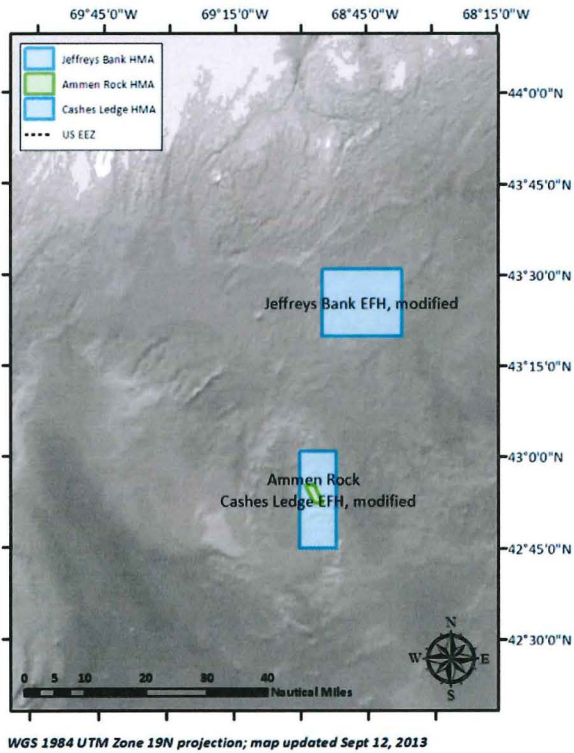
### Alternative 1



### Alternative 3



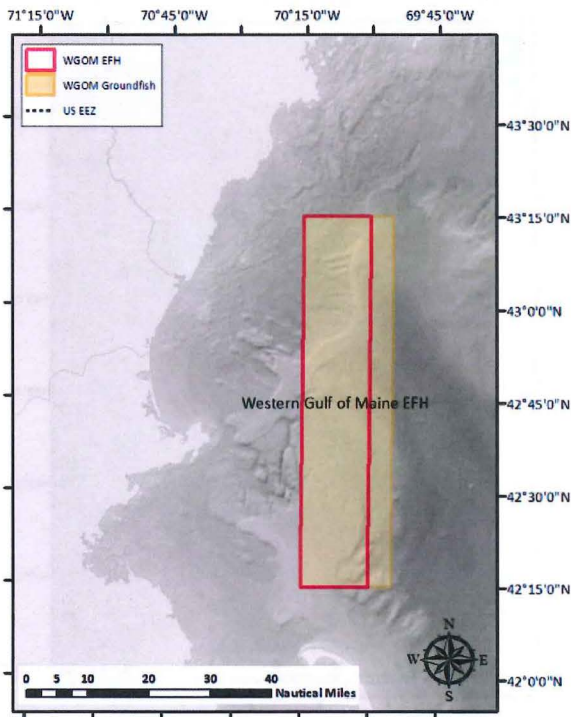
### Alternative 4



Omnibus Essential Fish Habitat Amendment 2  
Spatial Management Alternatives Maps

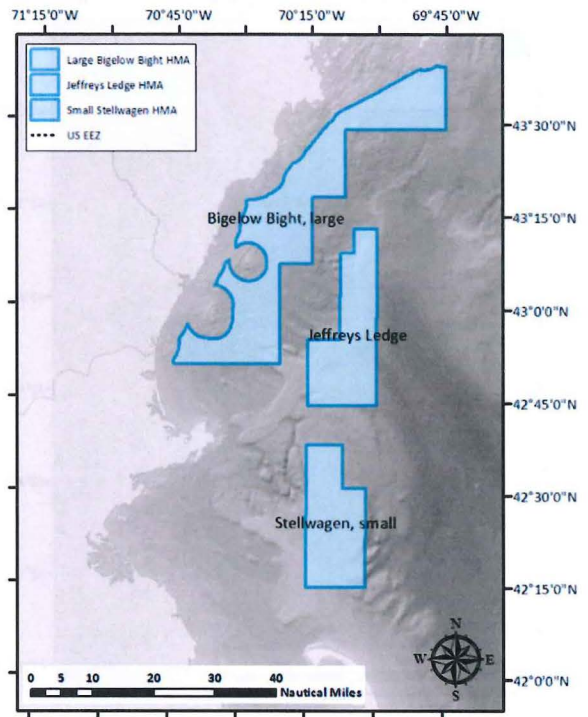
Western Gulf of Maine Habitat Management Alternatives

Alternative 1



WGS 1984 UTM Zone 19N projection; map updated Sept 12, 2013

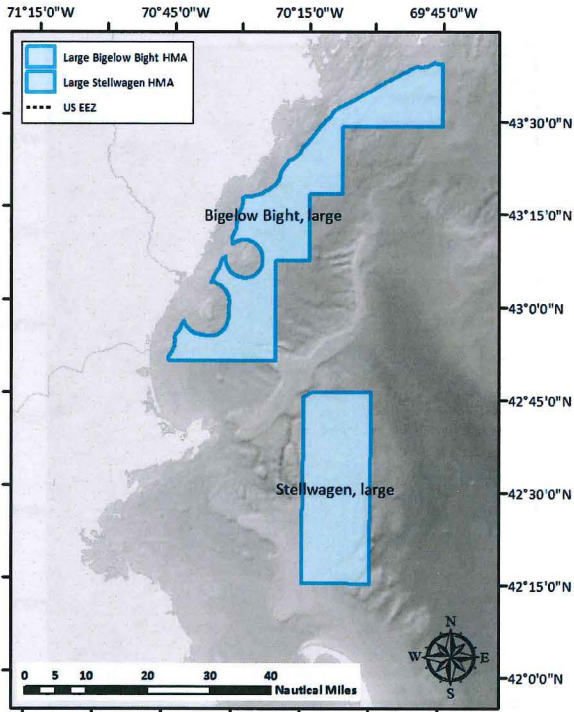
Alternative 3



WGS 1984 UTM Zone 19N projection; map updated Sept 12, 2013

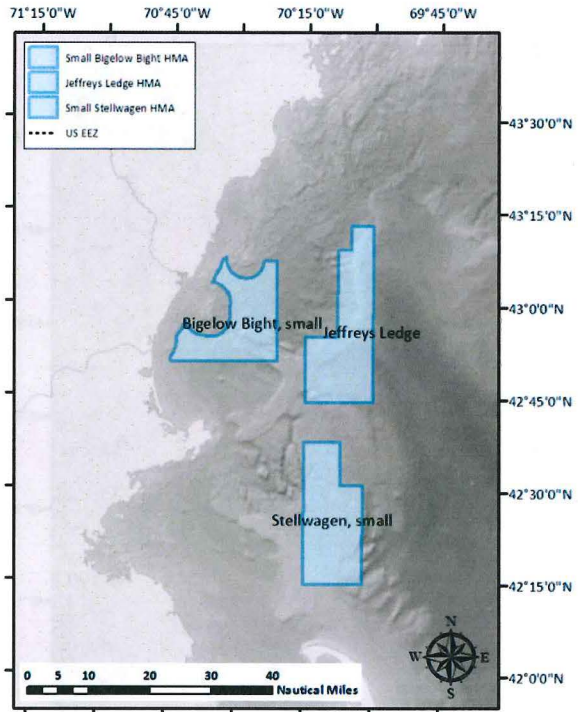
# Omnibus Essential Fish Habitat Amendment 2 Spatial Management Alternatives Maps

## Alternative 4



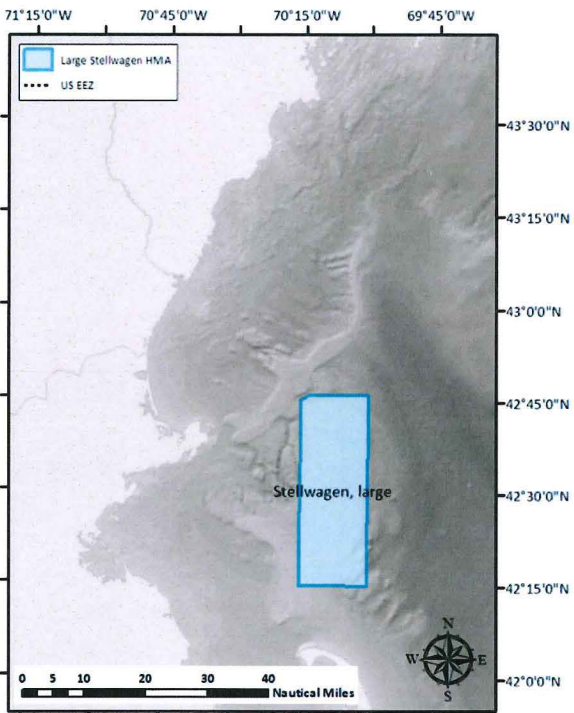
WGS 1984 UTM Zone 19N projection; map updated Sept 12, 2013

## Alternative 5



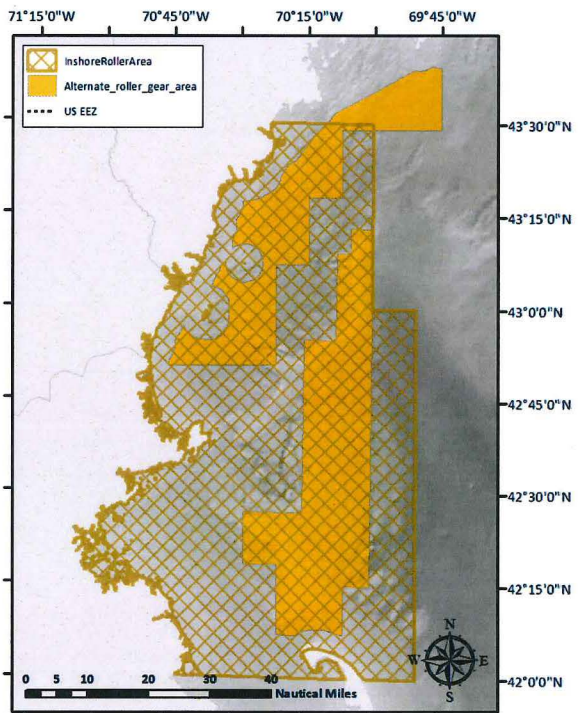
WGS 1984 UTM Zone 19N projection; map updated Sept 12, 2013

## Alternative 6



WGS 1984 UTM Zone 19N projection; map updated Sept 12, 2013

## Alternative 7

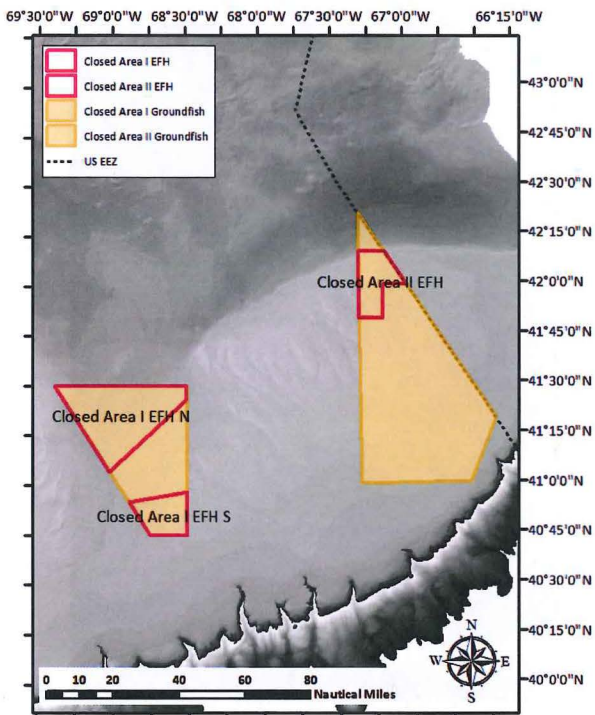


WGS 1984 UTM Zone 19N projection; map updated Sept 12, 2013

# Omnibus Essential Fish Habitat Amendment 2 Spatial Management Alternatives Maps

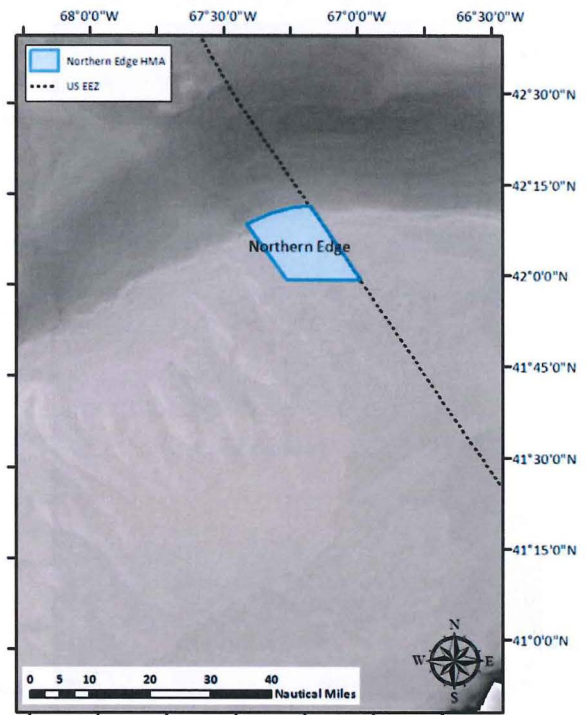
## Georges Bank Habitat Management Alternatives

### Alternative 1



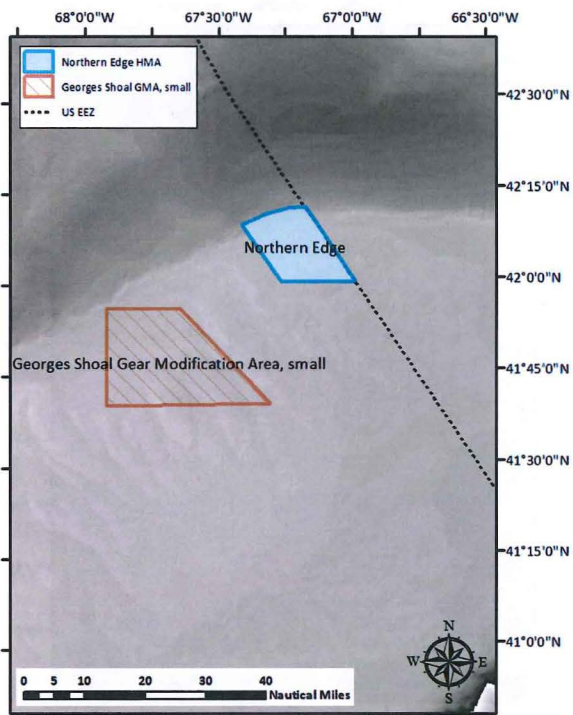
WGS 1984 UTM Zone 19N projection; map updated Sept 12, 2013

### Alternative 3



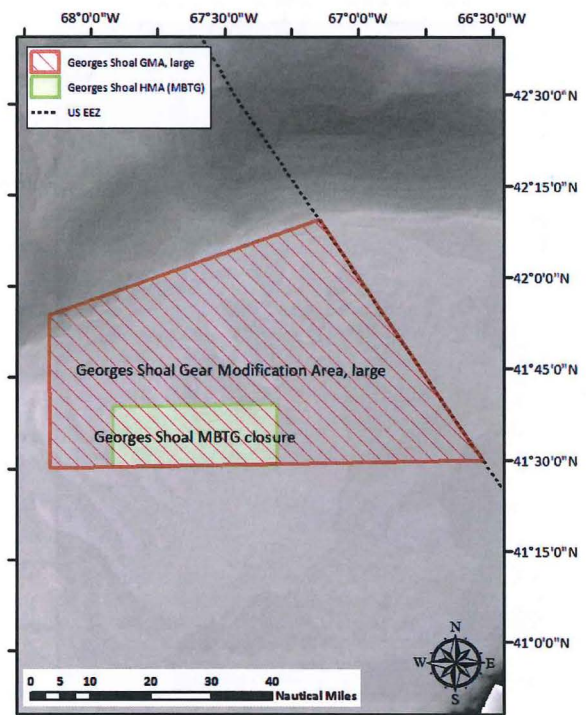
WGS 1984 UTM Zone 19N projection; map updated Sept 12, 2013

### Alternative 4



WGS 1984 UTM Zone 19N projection; map updated Sept 12, 2013

### Alternative 5

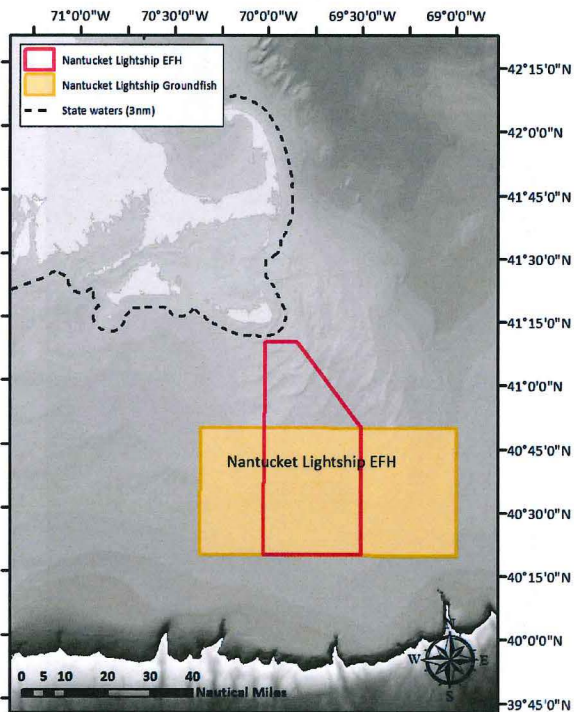


WGS 1984 UTM Zone 19N projection; map updated Sept 12, 2013

# Omnibus Essential Fish Habitat Amendment 2 Spatial Management Alternatives Maps

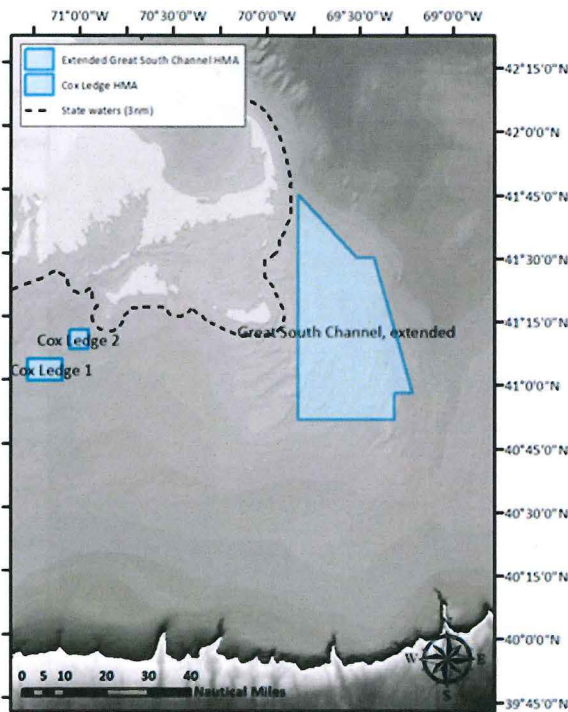
## Great South Channel/Southern New England Habitat Management Alternatives

### Alternative 1



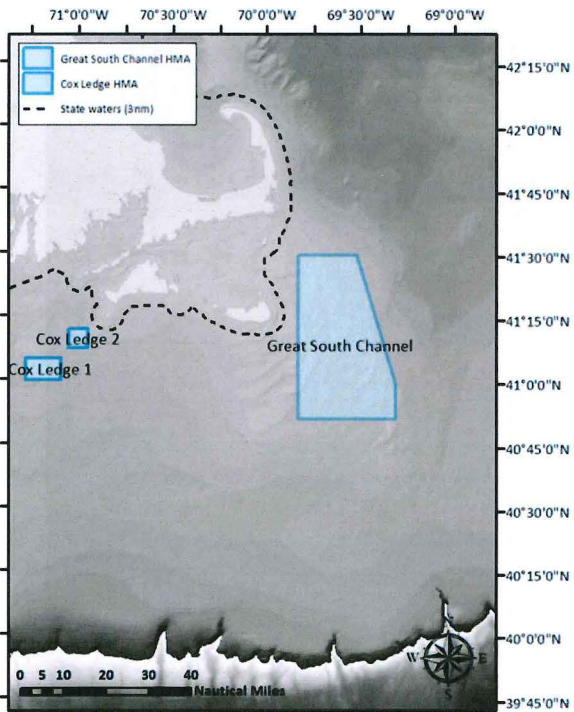
WGS 1984 UTM Zone 19N projection; map updated Sept 12, 2013

### Alternative 3



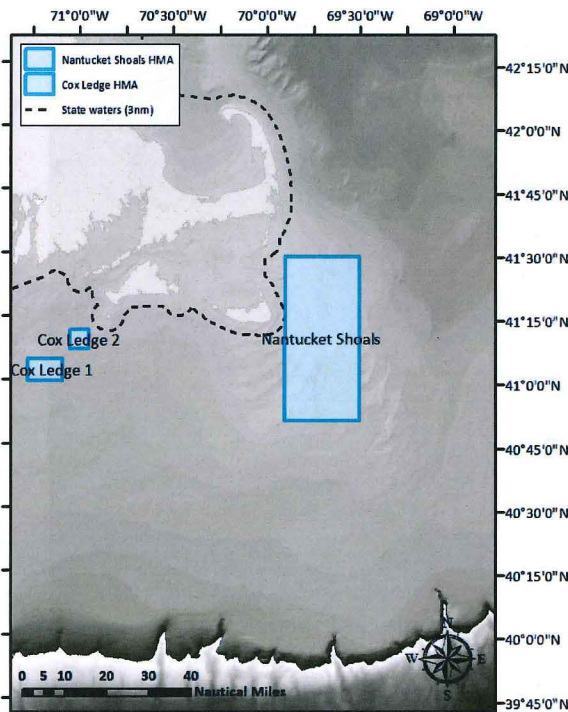
WGS 1984 UTM Zone 19N projection; map updated Sept 12, 2013

### Alternative 4



WGS 1984 UTM Zone 19N projection; map updated Sept 12, 2013

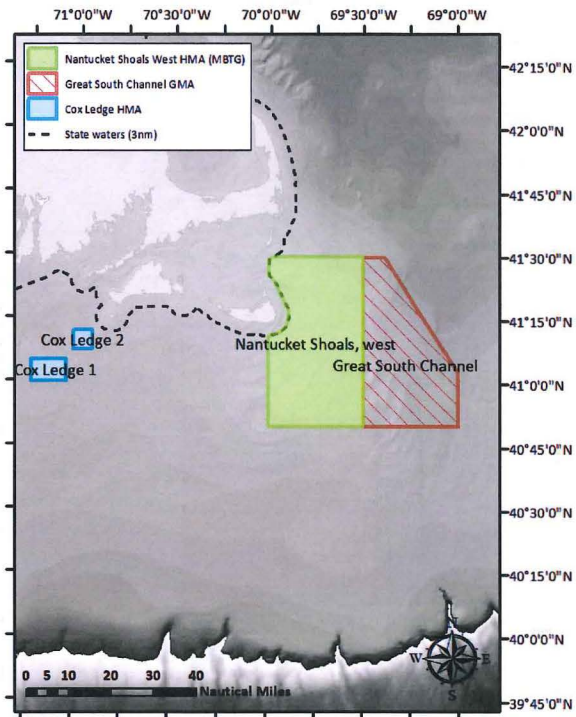
### Alternative 5



WGS 1984 UTM Zone 19N projection; map updated Sept 12, 2013

# Omnibus Essential Fish Habitat Amendment 2 Spatial Management Alternatives Maps

## Alternative 6

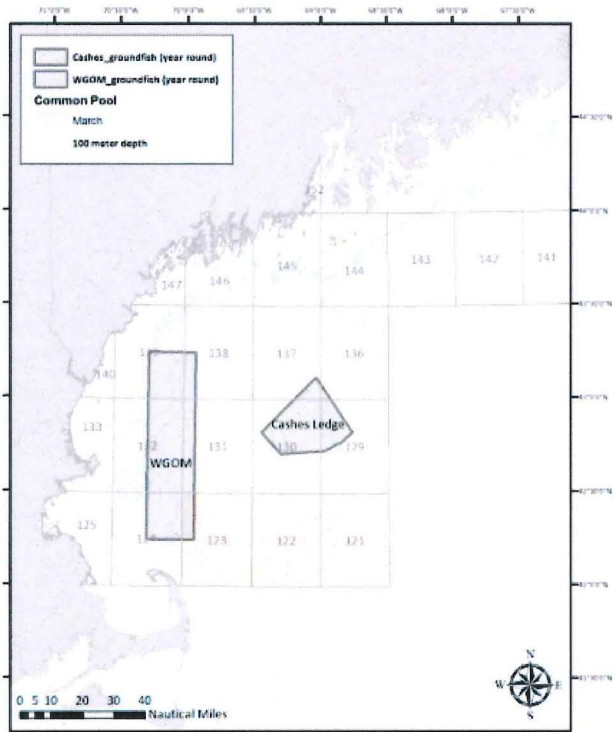


WGS 1984 UTM Zone 19N projection; map updated Sept 12, 2013

# Omnibus Essential Fish Habitat Amendment 2 Spatial Management Alternatives Maps

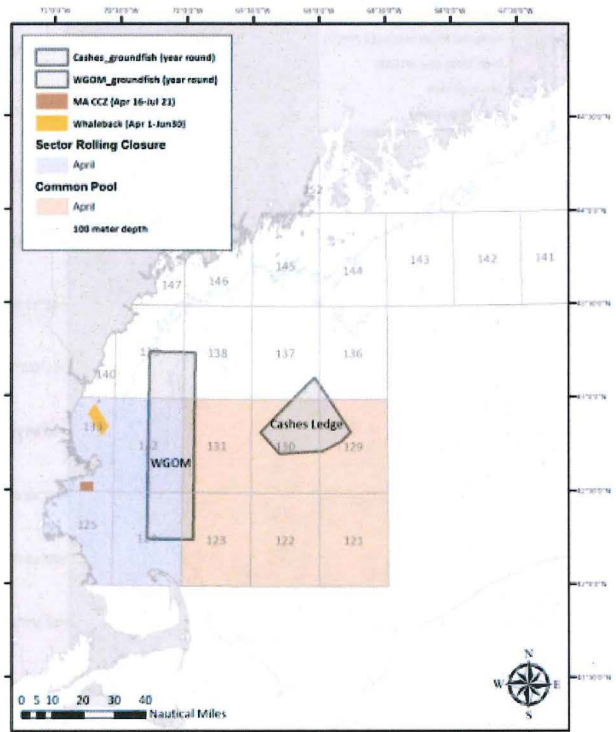
## GOM Spawning Alternative 1

March



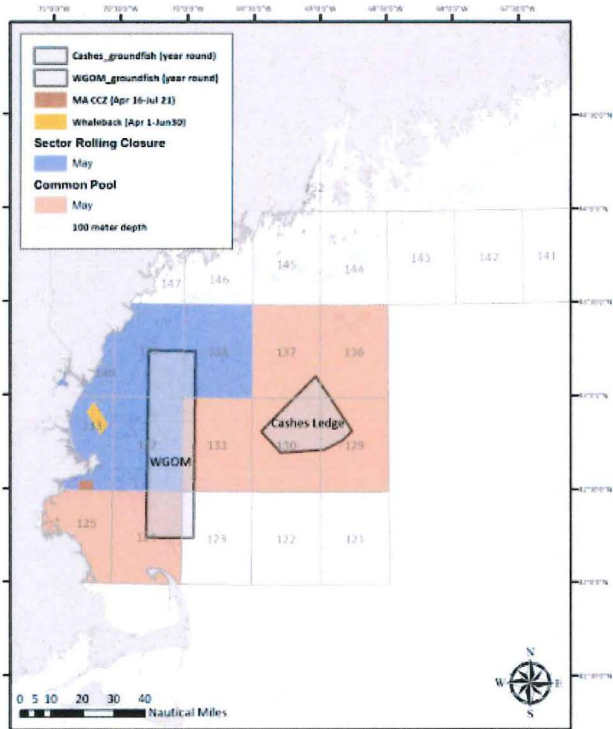
WGS 1984 UTM Zone 19N projection; map updated July 12, 2013

April



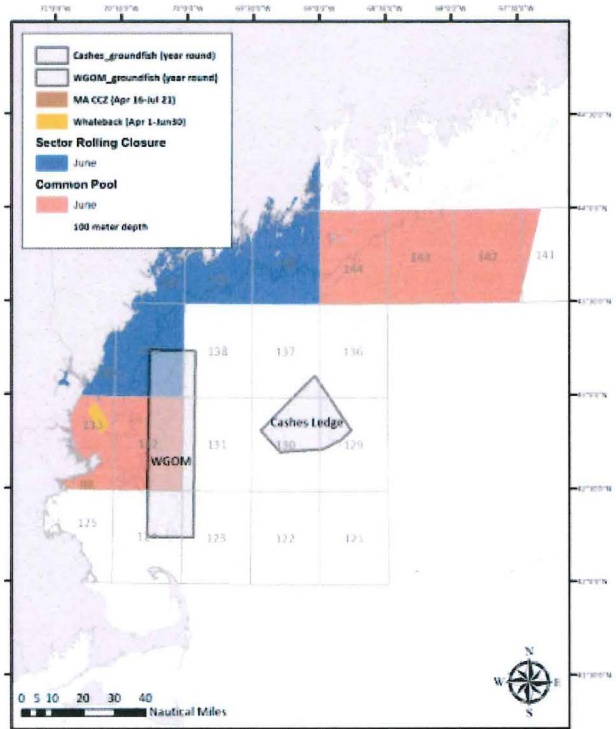
WGS 1984 UTM Zone 19N projection; map updated July 12, 2013

May



WGS 1984 UTM Zone 19N projection; map updated July 12, 2013

June

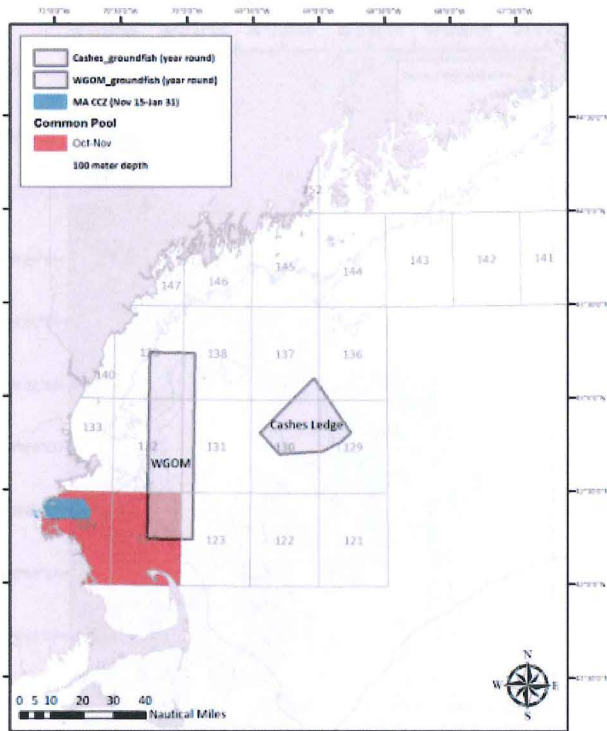


WGS 1984 UTM Zone 19N projection; map updated July 12, 2013



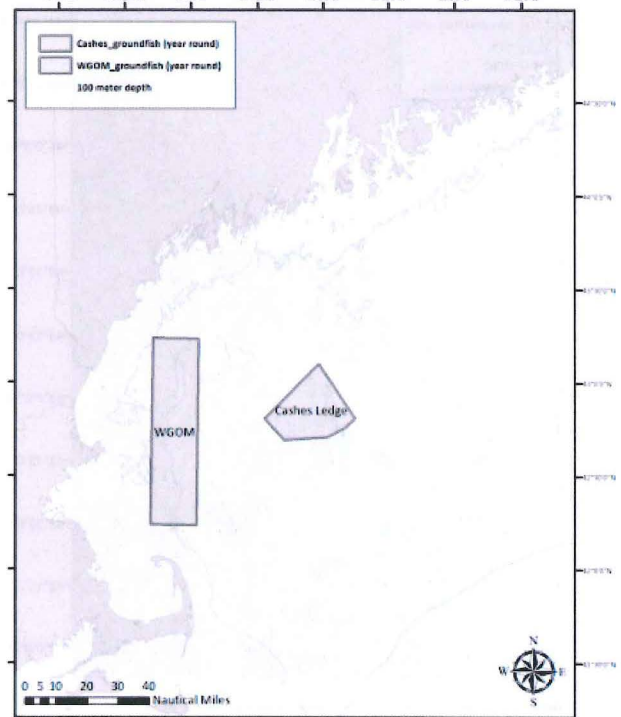
## Omnibus Essential Fish Habitat Amendment 2 Spatial Management Alternatives Maps

### Oct-Nov



WGS 1984 UTM Zone 19N projection; map updated July 12, 2013

### Remaining months (Jan, Feb, July, Aug, Sept, Dec) have year round closures only

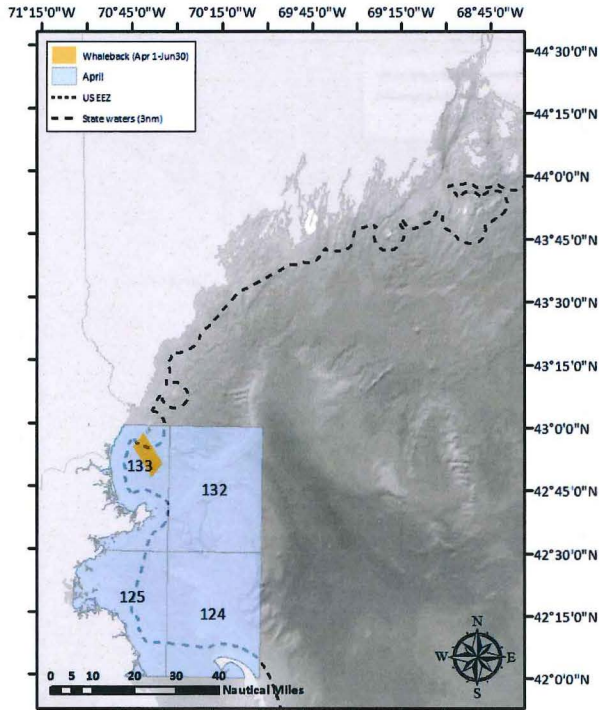


WGS 1984 UTM Zone 19N projection; map updated July 12, 2013

# Omnibus Essential Fish Habitat Amendment 2 Spatial Management Alternatives Maps

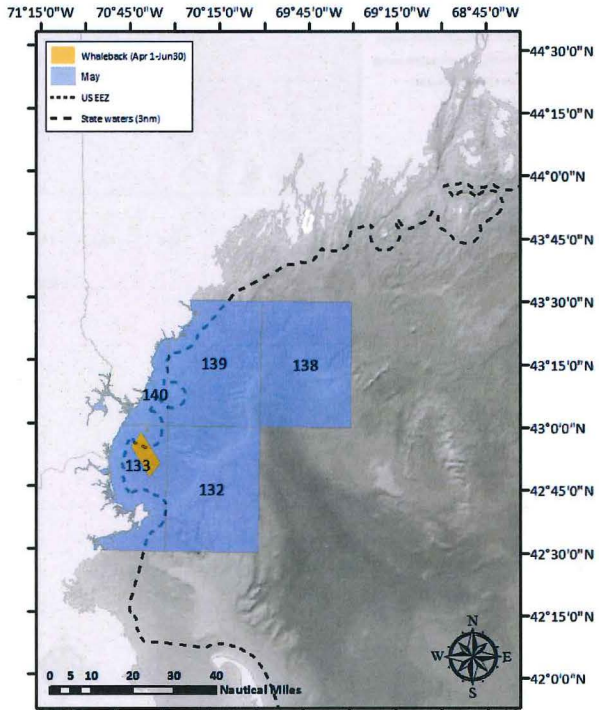
## GOM Spawning Alternative 2

**April 1 – April 30**



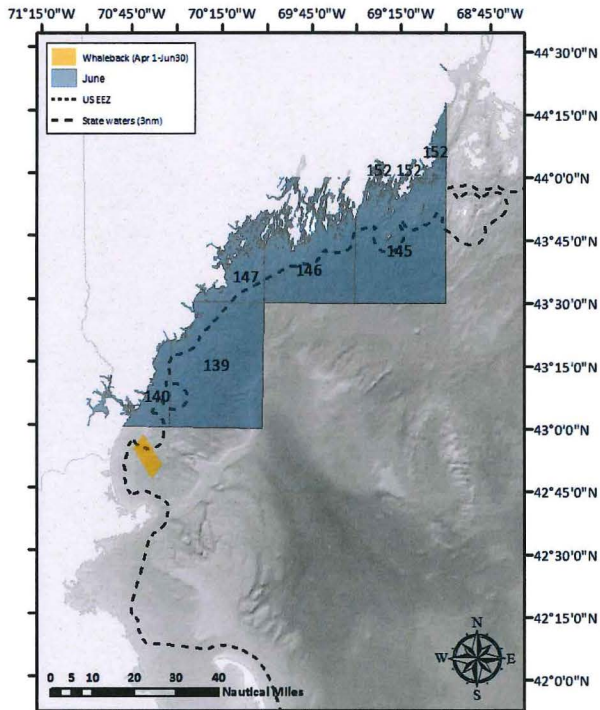
WGS 1984 UTM Zone 19N projection; map updated Sept 12, 2013

**May 1 – May 31**



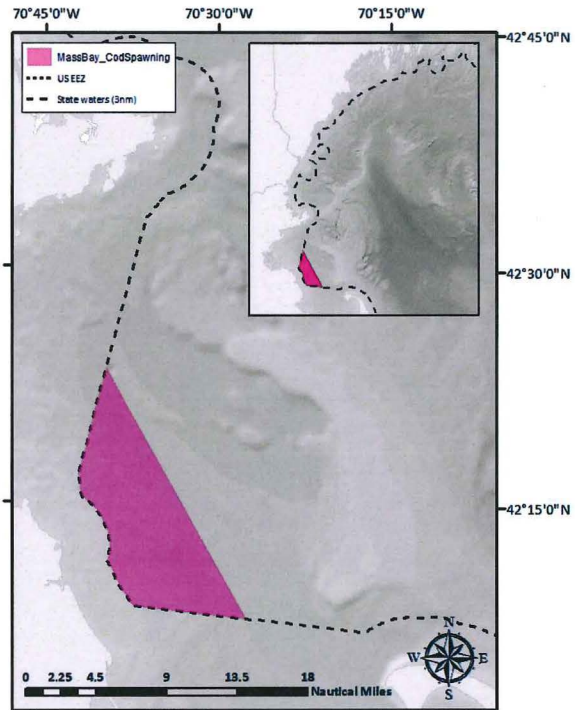
WGS 1984 UTM Zone 19N projection; map updated Sept 12, 2013

**June 1 – June 30**



WGS 1984 UTM Zone 19N projection; map updated Sept 12, 2013

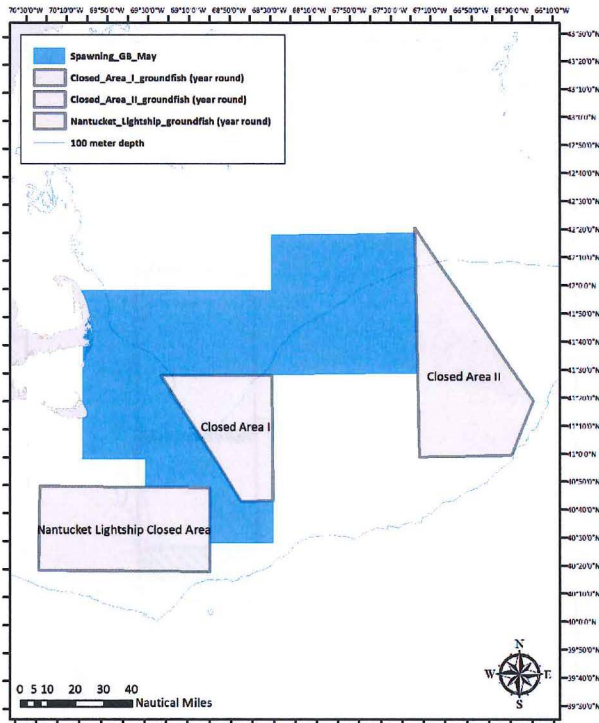
**November 1-January 31**



WGS 1984 UTM Zone 19N projection; map updated Sept 12, 2013

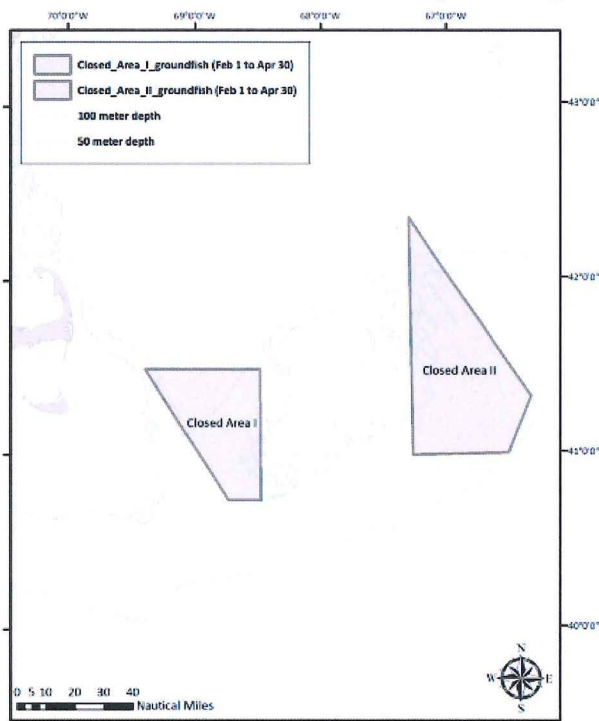
# Omnibus Essential Fish Habitat Amendment 2 Spatial Management Alternatives Maps

## GB Spawning Alternative 1

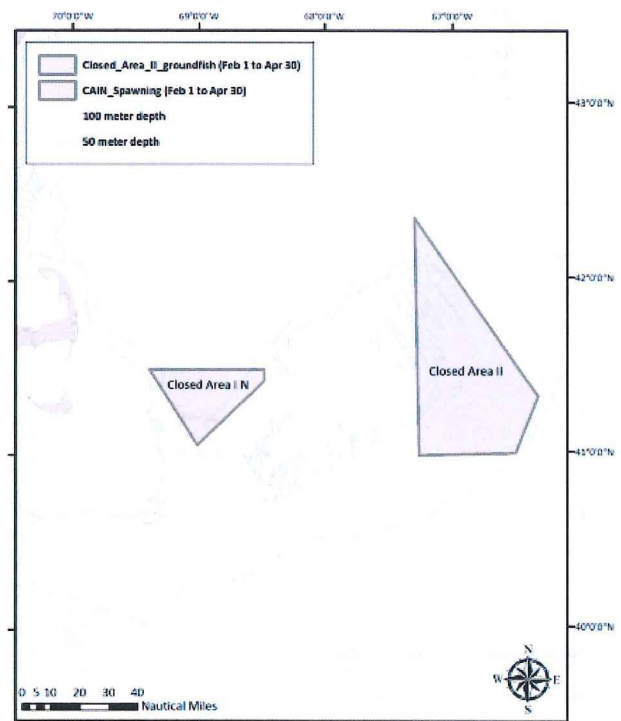


WGS 1984 UTM Zone 19N projection; map updated July 12, 2013

## GB Spawning Alternative 2 and 3



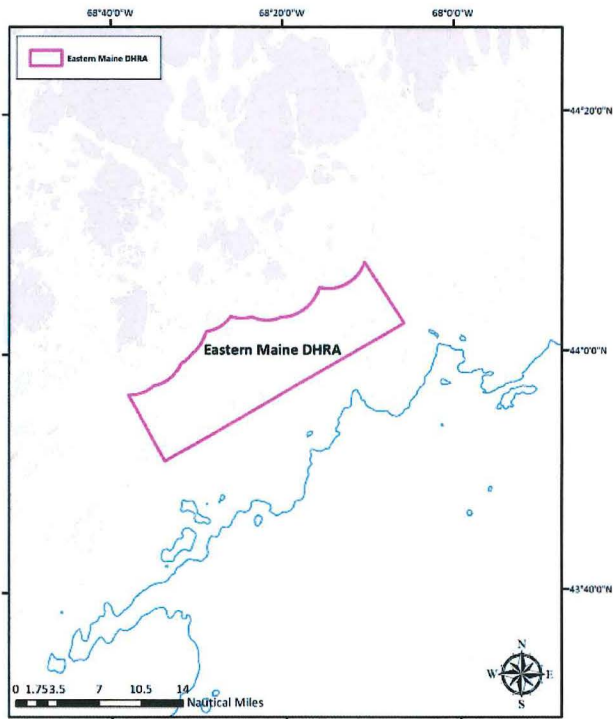
WGS 1984 UTM Zone 19N projection; map updated July 15, 2013



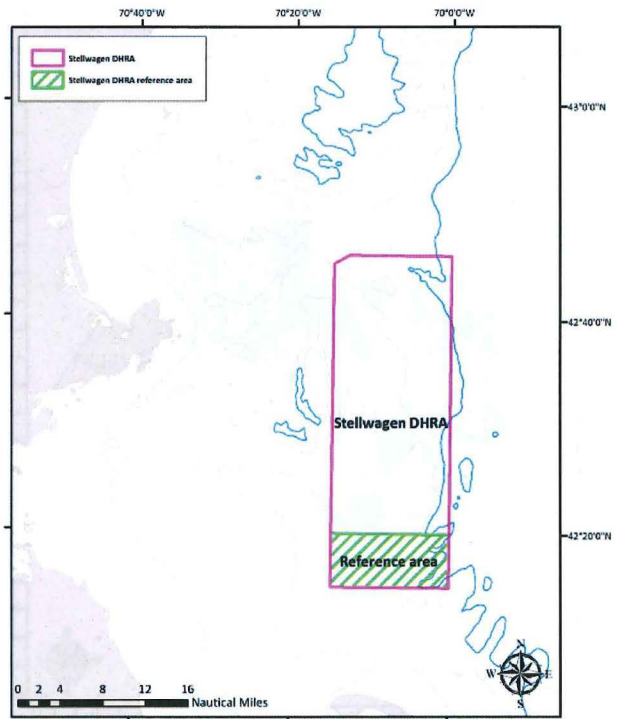
WGS 1984 UTM Zone 19N projection; map updated July 15, 2013

# Omnibus Essential Fish Habitat Amendment 2 Spatial Management Alternatives Maps

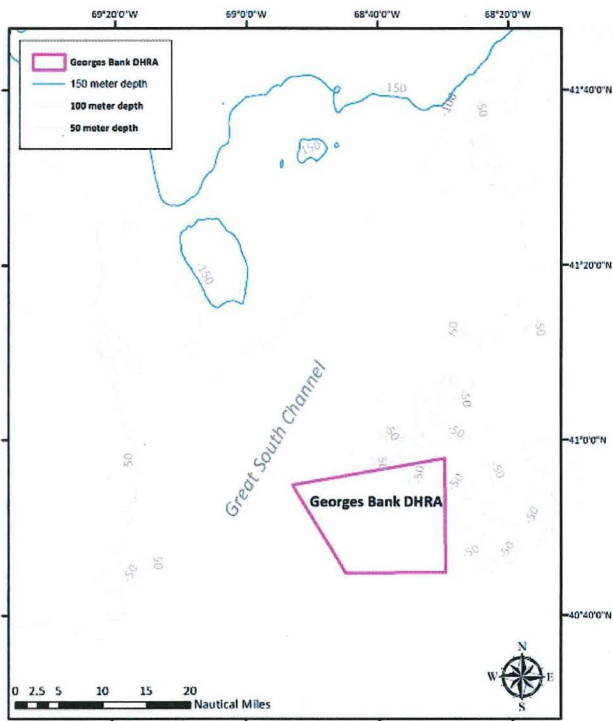
## Dedicated Habitat Research Areas



WGS 1984 UTM Zone 19N projection; map updated July 19, 2013



WGS 1984 UTM Zone 19N projection; map updated July 19, 2013



WGS 1984 UTM Zone 19N projection; map updated July 19, 2013